



JUMEIRAH

ASORA BAY

OCEAN MANSIONS







# CONTENT

JUMEIRAH	04
JUMEIRAH RESIDENCES	06
JUMEIRAH ASORA BAY	08
THE VISION	10
THE LOCATION	13
LIVING IN ULTRA	18
OCEAN MANSIONS	27
FLOOR PLANS	48
MERAAS	61



The image features a close-up, high-angle view of sand dunes. The sand is a warm, golden-brown color, and the dunes are characterized by smooth, undulating ridges and valleys. The lighting creates soft shadows, emphasizing the texture and contours of the sand. In the center of the image, the word "JUMEIRAH" is written in a white, elegant serif typeface. The letters are well-spaced and have a classic, sophisticated feel. The overall composition is minimalist and evokes a sense of luxury and tranquility, typical of a high-end resort or travel brand.

JUMEIRAH



# LEADERS IN GLOBAL HOSPITALITY



Jumeirah Hotels and Resorts have been at the forefront of global hospitality for over two decades. They proudly stand as the creators of internationally iconic properties such as Burj Al Arab in Dubai, Olhahali Island in the Maldives, and Capri Palace in Italy, to name just a few.





# JUMEIRAH

RESIDENCES



# A REALM OF LUXURY IN LIVING SPACES

Jumeirah Residences represent an ultra-luxurious and serviced residential development brand, offering a lifestyle defined by exclusivity, originality and sophistication.

Jumeirah Residences have successfully introduced Marsa Al Arab, a collaboration with Meraas, where opulent residences and the breathtaking allure of a waterfront location come to life.

As architects of magnificent design and hospitality, Meraas and Jumeirah Residences will yet again leave an indelible mark on Dubai's skyline with Jumeirah Asora Bay.







# JUMEIRAH

ASORA BAY



# FROM THE SERENE TO THE SENSATIONAL



Jumeirah Asora Bay offers an unparalleled lifestyle with a collection of residences ranging from four to seven bedrooms. Each is a masterpiece, crafted with private amenities and shared spaces to create a retreat of both grandeur and intimacy.

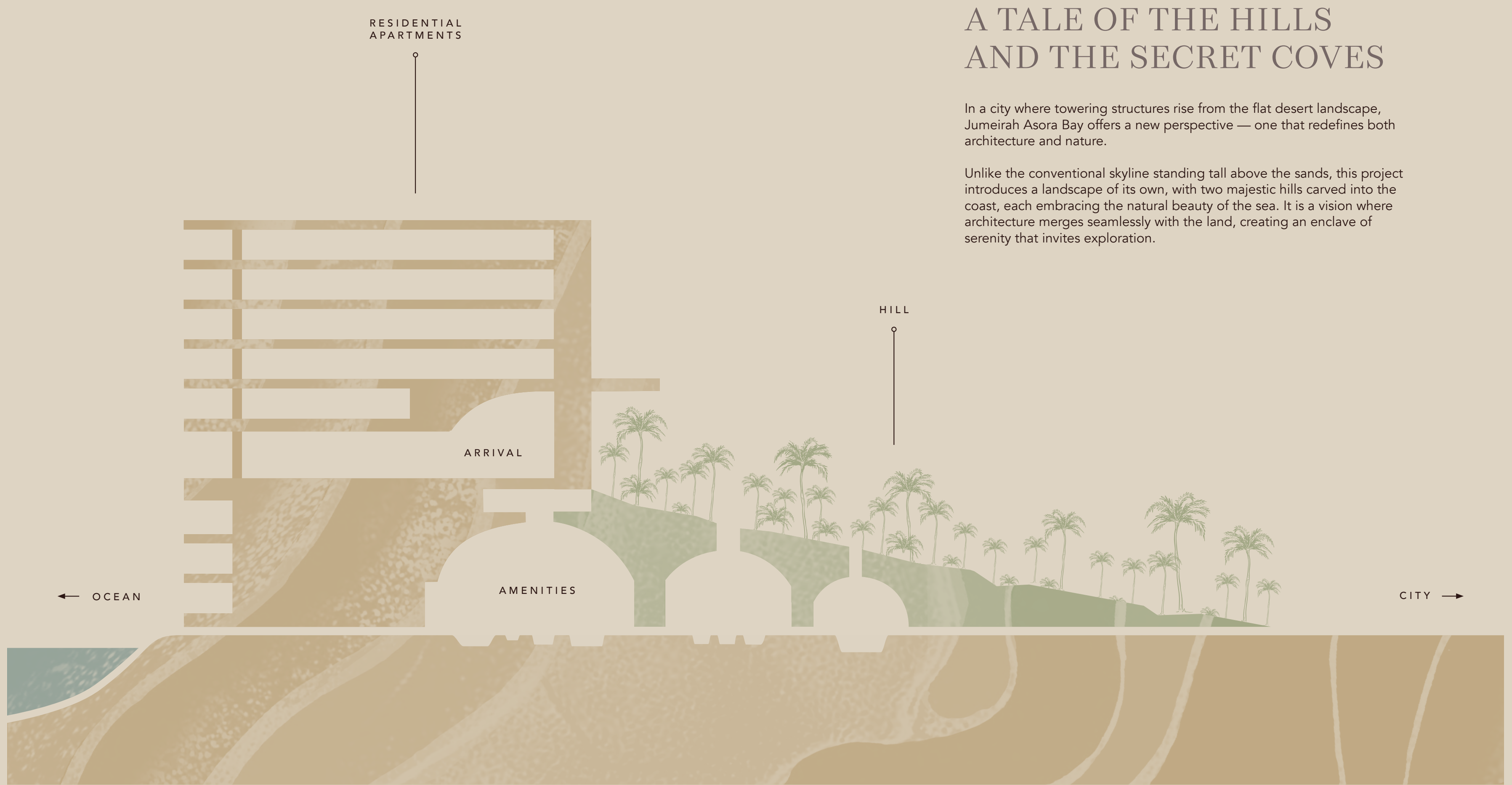
Designed for those who seek more, Jumeirah Asora Bay redefines hospitality with an innovative approach. Here, guests are welcomed into a haven of warmth and rejuvenation, with a wellness spa, members club, and more to provide comfort and mindful well-being.



A high-contrast, black and white photograph of a person's face, heavily shadowed. The person's eyes are closed, and their hand is visible near their face, suggesting a contemplative or resting pose. The lighting creates deep shadows, emphasizing the contours of the face and hand. The text "THE VISION" is centered over the image in a white, serif font.

# THE VISION





# A TALE OF THE HILLS AND THE SECRET COVES

In a city where towering structures rise from the flat desert landscape, Jumeirah Asora Bay offers a new perspective — one that redefines both architecture and nature.

Unlike the conventional skyline standing tall above the sands, this project introduces a landscape of its own, with two majestic hills carved into the coast, each embracing the natural beauty of the sea. It is a vision where architecture merges seamlessly with the land, creating an enclave of serenity that invites exploration.



# A NEW HORIZON OF LIVING



At Jumeirah Asora Bay, your journey begins with an immersion into a valley that winds through lush, green landscapes. As you ascend the hills, you'll experience a fusion of nature and design that creates breathtaking beauty. Hidden coves along the cliffside beach redefine the horizon, reshaping what it means to live by the sea.

Far beyond the expected, Jumeirah Asora Bay offers a place of connection — to both the surroundings and oneself.





# THE LOCATION



# A NEW COASTAL LANDSCAPE

J1 BEACH	4 MINUTES
CITY WALK	9 MINUTES
DUBAI MALL	10 MINUTES
BVLGARI RESORT DUBAI	10 MINUTES
JUMEIRAH BEACH	13 MINUTES
BURJ KHALIFA	11 MINUTES
DUBAI INTERNATIONAL AIRPORT	17 MINUTES
MALL OF THE EMIRATES	18 MINUTES
BURJ AL-ARAB	21 MINUTES
DUBAI KNOWLEDGE PARK	21 MINUTES
HISTORIC OLD TOWN	24 MINUTES
PALM JUMEIRAH	33 MINUTES
DUBAI MARINA	30 MINUTES





# THE ULTIMATE EXPRESSION OF LIVING

Just 5 kilometres from Downtown,  
La Mer captures the essence of coastal  
refinement, blending natural beauty with  
an elevated lifestyle. Located on Jumeirah  
Street, this seaside destination transcends

expectations — from the pristine sands  
of the Arabian Gulf to the vibrant  
shores of J1 Beach, where exclusive  
dining experiences bring a new level of  
sophistication to beachfront cuisine.



PORT DE LA MER

J1 BEACH

LA MER SOUTH

DOWNTOWN DUBAI

JUMEIRAH ASORA BAY

OCEAN MANSIONS

JUMEIRAH RESIDENCES ASORA BAY




# MASTERPLAN

- |                         |                  |
|-------------------------|------------------|
| 1 OCEAN MANSIONS        | 6 HOTEL POOLS    |
| 2 HOTEL VILLAS          | 7 HOTEL BEACH    |
| 3 HOTEL BUILDING        | 8 HOTEL HILLSIDE |
| 4 SPECIALITY RESTAURANT | 9 DOCK           |
| 5 RESIDENCES            |                  |





# RESIDENTIAL AMENITIES

- 
- The image is an aerial architectural rendering of a coastal residential development. It features a large body of water on the left, a sandy beach, and a series of buildings and landscaped areas. Numbered circles (1-14) are placed throughout the site to indicate specific amenities. The buildings are arranged in a row along the coast, with various pools and gardens interspersed. The overall style is modern and luxurious, with a focus on outdoor living and coastal views.
- |                    |                               |                            |
|--------------------|-------------------------------|----------------------------|
| 1 LAP POOL         | 6 APARTMENTS PARKING ENTRANCE | 11 OCEAN MANSIONS PARKING  |
| 2 INFINITY POOL    | 7 APARTMENTS DROP-OFF         | 12 OCEAN MANSIONS ENTRANCE |
| 3 INFINITY TERRACE | 8 MAIN ENTRANCE               | 13 SKYLINE GARDEN          |
| 4 COASTAL GARDEN   | 9 PENTHOUSE VIP DROP-OFF      | 14 MULTI-PURPOSE SPACE     |
| 5 SCULPTURE GARDEN | 10 OCEAN MANSIONS ACCESS      |                            |







# BEYOND THE EXPECTED

Hidden from plain sight, Jumeirah Asora Bay is a place where every moment is infused with wonder. It is a realm conceptualised for those who seek more — where the ordinary gives way to the extraordinary, and the boundaries of living are expanded to new heights.

“Living in Ultra” goes beyond anything done before. Meraas’ vision for Jumeirah Asora Bay introduces a destination where wellness, nature, and craftsmanship come together to create an unmatched experience. In a city dominated by glass towers, Jumeirah Asora Bay stands out as a destination rooted in natural beauty, redefining modern living.








## AN ESCAPE INTO WELLNESS AND EXPLORATION

At Jumeirah Asora Bay, every amenity is thoughtfully crafted to enrich both body and mind, providing a seamless blend of wellness and exploration. The exclusive residents' lounge, spa, gym facilities, and specialty restaurants offer an ever-evolving journey of discovery.

Each experience is designed to inspire well-being, connection, and delight, elevating every moment of life at Jumeirah Asora Bay.





JUMEIRAH ASORA BAY  
IS MORE THAN A PLACE TO  
LIVE; IT'S AN IMMERSIVE  
JOURNEY INTO NATURE'S  
EVER-CHANGING BEAUTY.



## DINING ELEVATED TO THE SUBLIME

Jumeirah Asora Bay redefines dining with a series of transformative experiences by the renowned Jumeirah chefs.

Guests can enjoy all-day dining inspired by the beauty of Arabian landscapes, surrounded by cascading waters and lush greenery. Elevated venues on the hilltop bring gourmet cuisine to life with panoramic city views, creating intimate and memorable moments. Along the coastline, oceanfront dining extends over the water, allowing guests to savour meals at the water's edge, immersed in the sights and sounds of the sea.





WELLNESS BEYOND



BOUNDARIES



Start a voyage of personal transformation at Jumeirah Asora Bay. Infinity pools cascade toward the horizon, yoga decks overlook the sea, and secluded spaces invite moments of quiet reflection. Wellness here is a sanctuary of renewal — a place where every element works in harmony to elevate your well-being beyond the ordinary.

Nestled beneath the hill, an immersive spa offers a truly rejuvenating experience. With tranquil pools, serene outdoor spaces, and bespoke Jumeirah SPA treatments, each area is thoughtfully designed to nurture both body and mind.



## A HIDDEN COVE OF PERFECT HARMONY



Conceived to merge with the natural landscape, the beach lagoon provides an environment where residents can unwind in the cool embrace of the Arabian Gulf, surrounded by greenery.



## GARDENS ABOVE



## THE OCEAN



At Jumeirah Asora Bay, hillside gardens shaped by natural topography offer serene retreats. Winding paths, intimate seating areas, and lush greenery create an inviting space for reflection, blending personal relaxation with opportunities for shared moments.





## A WORLD OF MOVEMENT AND MINDFULNESS

Here, well-being is redefined through an active lifestyle immersed in nature. State-of-the-art courts are seamlessly integrated into the landscape, along with a running track that winds through lush, green hills.

The gym, surrounded by stone structures and flooded with natural light, invites both movement and mindfulness. Every element is thoughtfully designed to foster holistic well-being, offering a harmonious balance of energy and nature.



# OCEAN MANSIONS



## A NEW PINNACLE OF COASTAL LIVING

From stunning gardens to carefully curated interiors, each villa is a sanctuary made for inward reflection and outward beauty. The Ocean Mansions at Jumeirah Asora Bay embody a transformative experience, where nature and timeless architecture converge, creating a life that feels both grounded and extraordinary.





# OCEAN MANSIONS



- |                     |                   |
|---------------------|-------------------|
| 1 ARRIVAL COURTYARD | 5 OUTDOOR SHOWER  |
| 2 DINING AREA       | 6 PLANTING BUFFER |
| 3 GYM PAVILION      | 7 INFINITY POOL   |
| 4 POOL PLATFORM     | 8 TERRACE POOL    |




# THE ENTRANCE TO YOUR PRIVATE ESCAPE



As a villa resident, your journey begins with a winding road revealing a tapestry of trees and glimpses of the sea beyond.

Arriving at a shimmering bronze gate, you are welcomed into your secluded garden. Surrounded by lush greenery and the glimmer of your private pool, this is where quietness begins.





A PERSONAL SANCTUARY  
WITHIN THE EXQUISITE  
LANDSCAPE OF JUMEIRAH  
ASORA BAY.



# A SANCTUARY OF SEA, SKY, AND SERENITY



The Ocean Mansions offer a secluded oasis, enveloped by lush private gardens and the glistening waters of the sea. Each villa is a personal retreat, complete with an infinity ocean pool that dissolves into the horizon.

Nestled within these natural surroundings are tranquil garden rooms, offering spaces for

reflection, while outdoor dining areas invite you to enjoy meals under the stars, serenaded by the soothing rhythm of the waves. Integrated into the greenery are outdoor fitness areas, blending wellness with nature.



## PRESTIGE IN THREE LANDSCAPES

The Ocean Mansions' gardens offer three distinct planting styles, each crafted for a unique sense of immersion. Whether you prefer the serene elegance of a timeless design, the organic charm of nature landscapes, or the lush vibrancy of coastal greenery, these gardens cater to every aesthetic and lifestyle, transforming outdoor spaces into personalized sanctuaries of beauty, tranquility, and connection to nature.







## THE TIMELESS GARDEN

The timeless garden features topiary plantings and earth-toned beds arranged in perfect symmetry. This design emphasizes balance and elegance, creating a peaceful retreat for sophisticated outdoor living.

The harmonious blend of nature and design transforms any landscape into an oasis of refinement.





THE TIMELESS GARDEN



## THE NATURE GARDEN

The nature garden brings a soft, organic aesthetic, with layered textures and a seasonal flow that embraces natural evolution. This design style creates a serene and private retreat, showcasing the raw beauty of nature with an informal arrangement of plants. Beyond its visual charm, the garden fosters ecological harmony, offering a sustainable haven for those seeking tranquility and a deeper connection with nature.







THE NATURE GARDEN



# THE COASTAL GARDEN



The coastal garden captivates with vibrant foliage, bold blooms, and lush density, striking a perfect balance between relaxation and adventure. Defined by oversized leaves and richly textured layers, this garden style offers an immersive experience filled with dramatic beauty.

The coastal garden's dynamic palette and abundant greenery create a tranquil yet energizing retreat, transforming any outdoor space into a vibrant sanctuary.





THE COASTAL GARDEN





## INTERIORS OF TIMELESS ELEGANCE

The Ocean Mansions offer a sublime blend of privacy and exclusivity, nestled within lush, Mediterranean-inspired gardens. Expansive living areas merge effortlessly with private outdoor spaces, creating a harmonious connection between interior and exterior. Inside, open-plan layouts and resort-inspired

bathrooms evoke tranquility, while the lush surroundings enhance the sense of a private retreat. Every detail is thoughtfully designed to combine elegance and comfort, offering a lifestyle of refined sophistication.





MASTER BEDROOM





SECONDARY BEDROOM





MASTER BATHROOM





SECONDARY BATHROOM





LIVING ROOM





KITCHEN





DINING ROOM



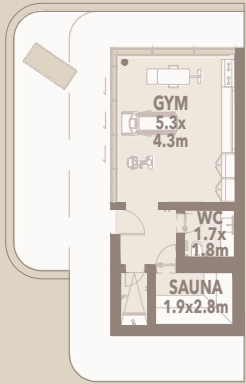




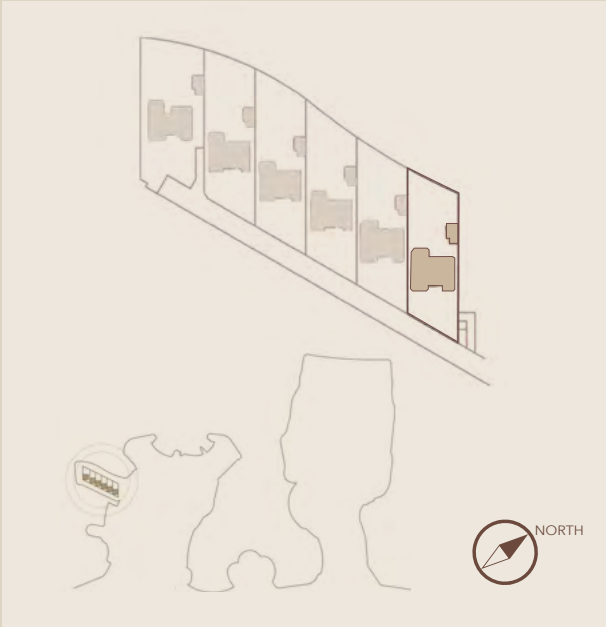
OCEAN MANSIONS  
TYPICAL

OM | 1

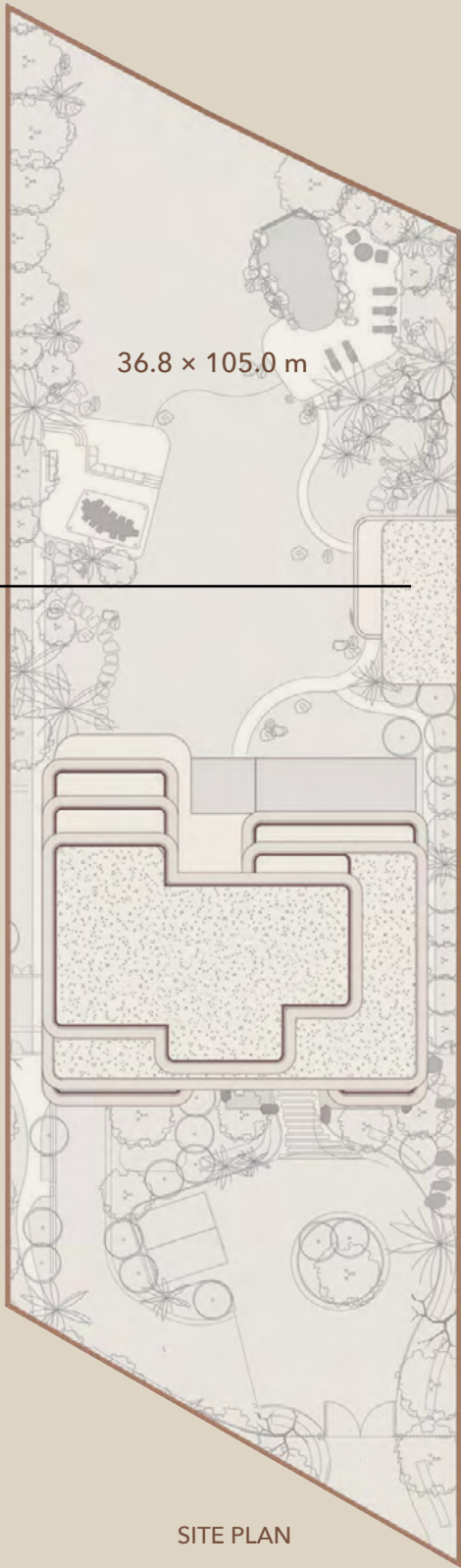
JUMEIRAH  
RESIDENCES  
ASORA BAY



GYM PAVILION FLOOR PLAN



SITE PLAN



BASEMENT FLOOR PLAN



GROUND FLOOR PLAN

UNIT SIZE

SUITE AREA (A) 1743.7 SQ M   18768.5 SQ FT	BALCONY AREA (B) 190.3 SQ M   2048.5 SQ FT	GARAGE AREA (C) 385.5 SQ M   4149.3 SQ FT	ENTRANCE / TERRACE AREA (D) 184.6 SQ M   1987 SQ FT
---	---	--	--

TOTAL AREA (A+B+C+D) 2504 SQ M   26953.3 SQ FT	TOTAL PLOT AREA 3893 SQ M   41903.6 SQ FT
---	--

PARKING

NO. OF SPACES: 7

Disclaimer: Plans, details and unit orientation included are indicative only and are subject to change by the developer/seller at its sole discretion without notice and/or liability. All images, including swimming pools and landscape features, interior and exterior features, finishes, furnishings, view and scale are illustrative only. Final areas, orientation, dimensions, layout and materials may differ from those stated.

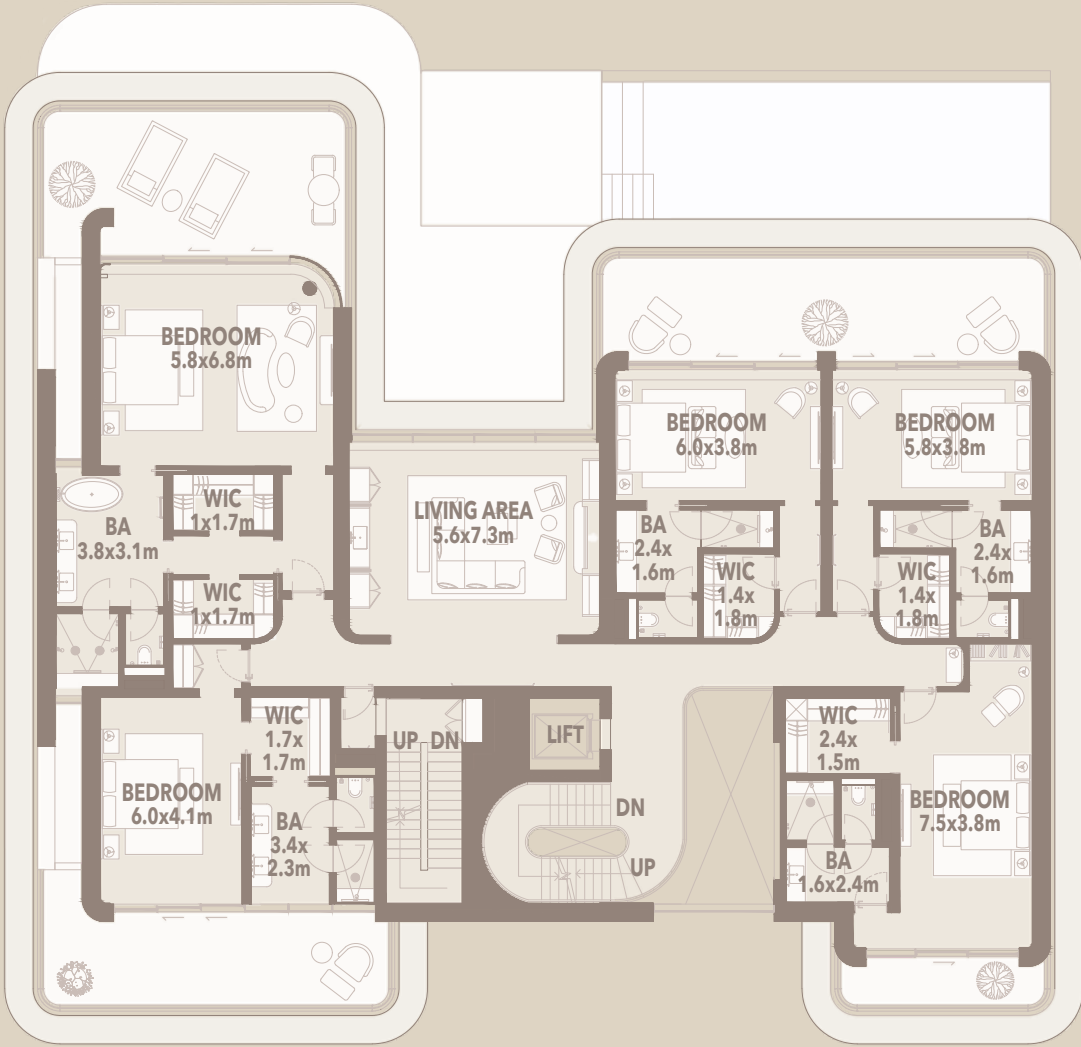
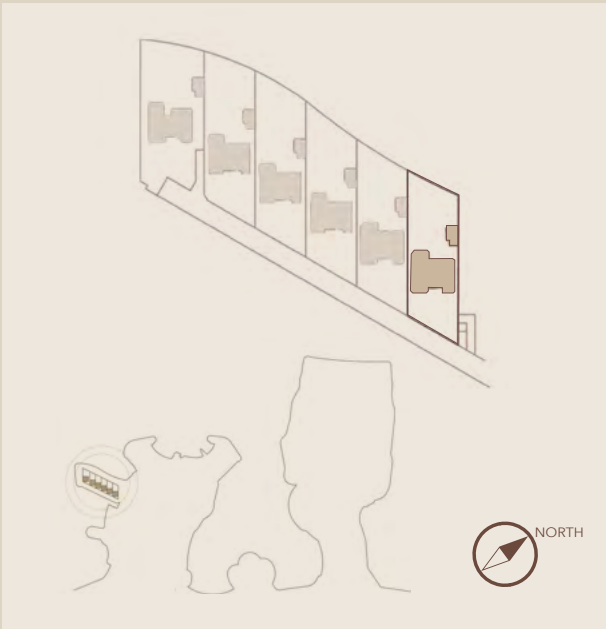




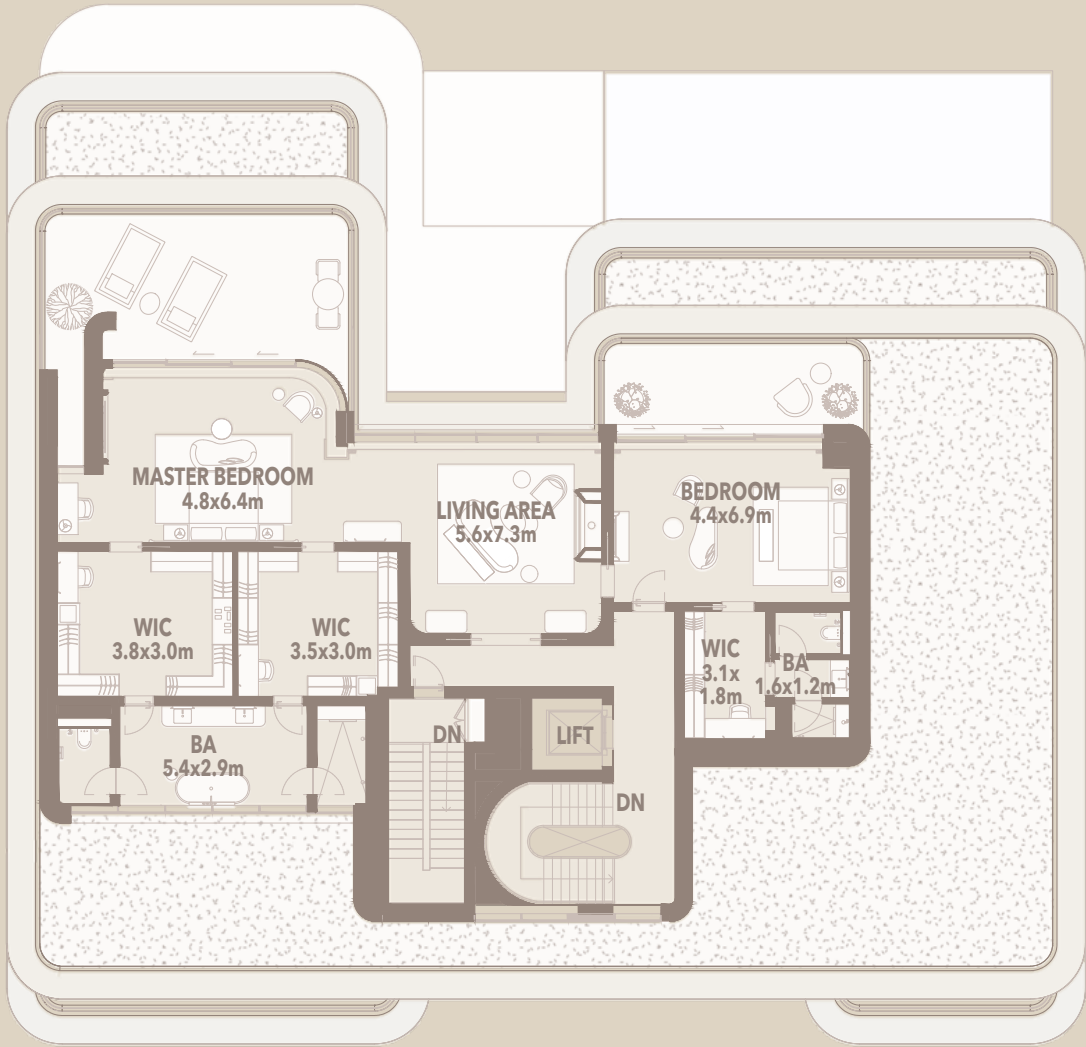
OCEAN MANSIONS  
TYPICAL

OM | 1

JUMEIRAH  
RESIDENCES  
ASORA BAY



FIRST FLOOR PLAN



SECOND FLOOR PLAN

UNIT SIZE

SUITE AREA (A) 1743.7 SQ M   18768.5 SQ FT	BALCONY AREA (B) 190.3 SQ M   2048.5 SQ FT	GARAGE AREA (C) 385.5 SQ M   4149.3 SQ FT	ENTRANCE / TERRACE AREA (D) 184.6 SQ M   1987 SQ FT
---	---	--	--

TOTAL AREA (A+B+C+D) 2504 SQ M   26953.3 SQ FT	TOTAL PLOT AREA 3893 SQ M   41903.6 SQ FT
---	--

PARKING

NO. OF SPACES: 7

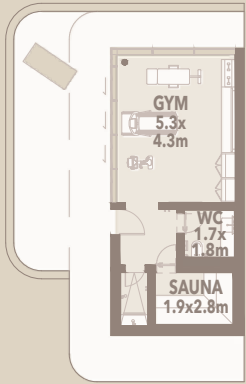
Disclaimer: Plans, details and unit orientation included are indicative only and are subject to change by the developer/seller at its sole discretion without notice and/or liability. All images, including swimming pools and landscape features, interior and exterior features, finishes, furnishings, view and scale are illustrative only. Final areas, orientation, dimensions, layout and materials may differ from those stated.



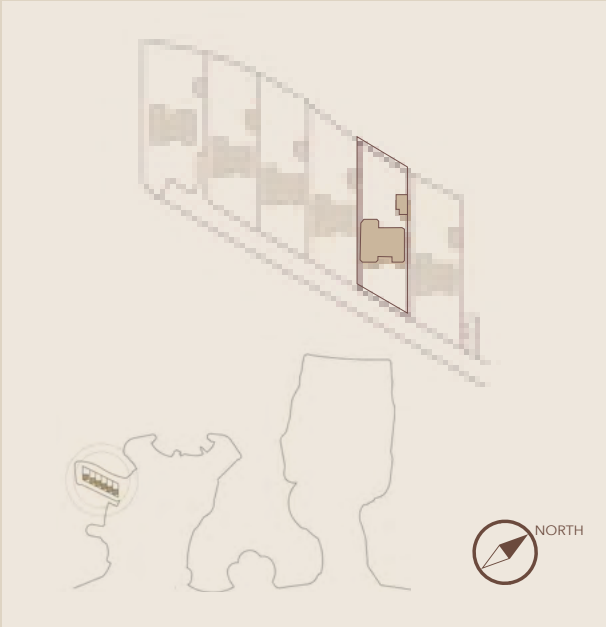


OCEAN MANSIONS  
TYPICAL

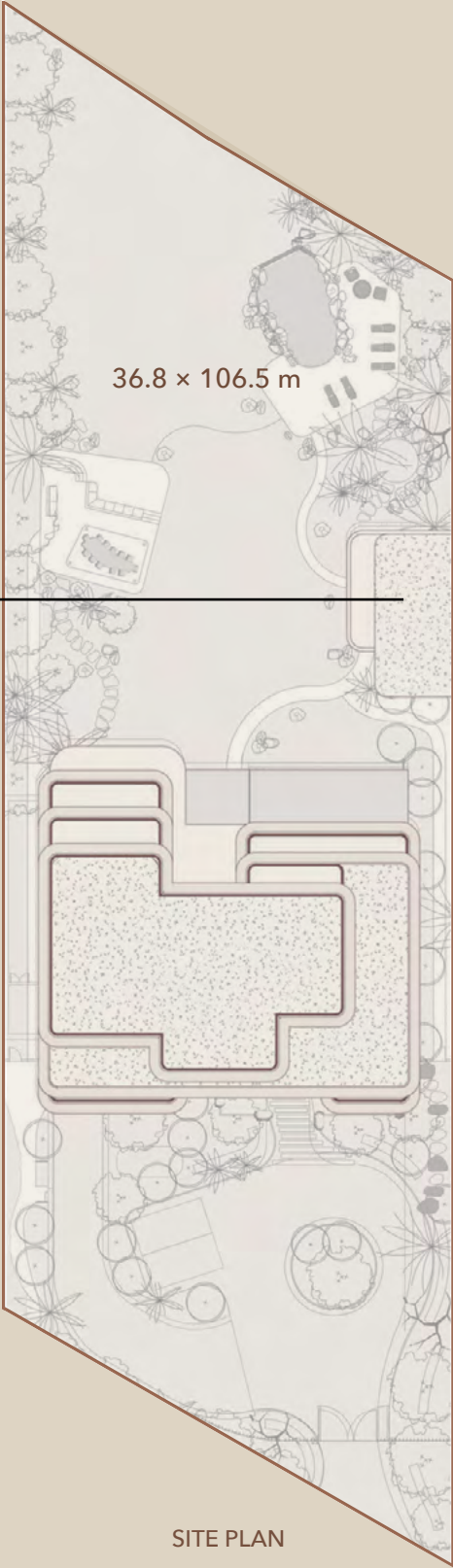
OM | 2



GYM PAVILION FLOOR PLAN



SITE PLAN



BASEMENT FLOOR PLAN



GROUND FLOOR PLAN

UNIT SIZE

SUITE AREA (A) 1743.7 SQ M   18768.5 SQ FT	BALCONY AREA (B) 190.3 SQ M   2048.5 SQ FT	GARAGE AREA (C) 385.5 SQ M   4149.3 SQ FT	ENTRANCE / TERRACE AREA (D) 184.6 SQ M   1987 SQ FT
TOTAL AREA (A+B+C+D) 2504 SQ M   26953.3 SQ FT	TOTAL PLOT AREA 3860.1 SQ M   41550.2 SQ FT		

PARKING

NO. OF SPACES: 7

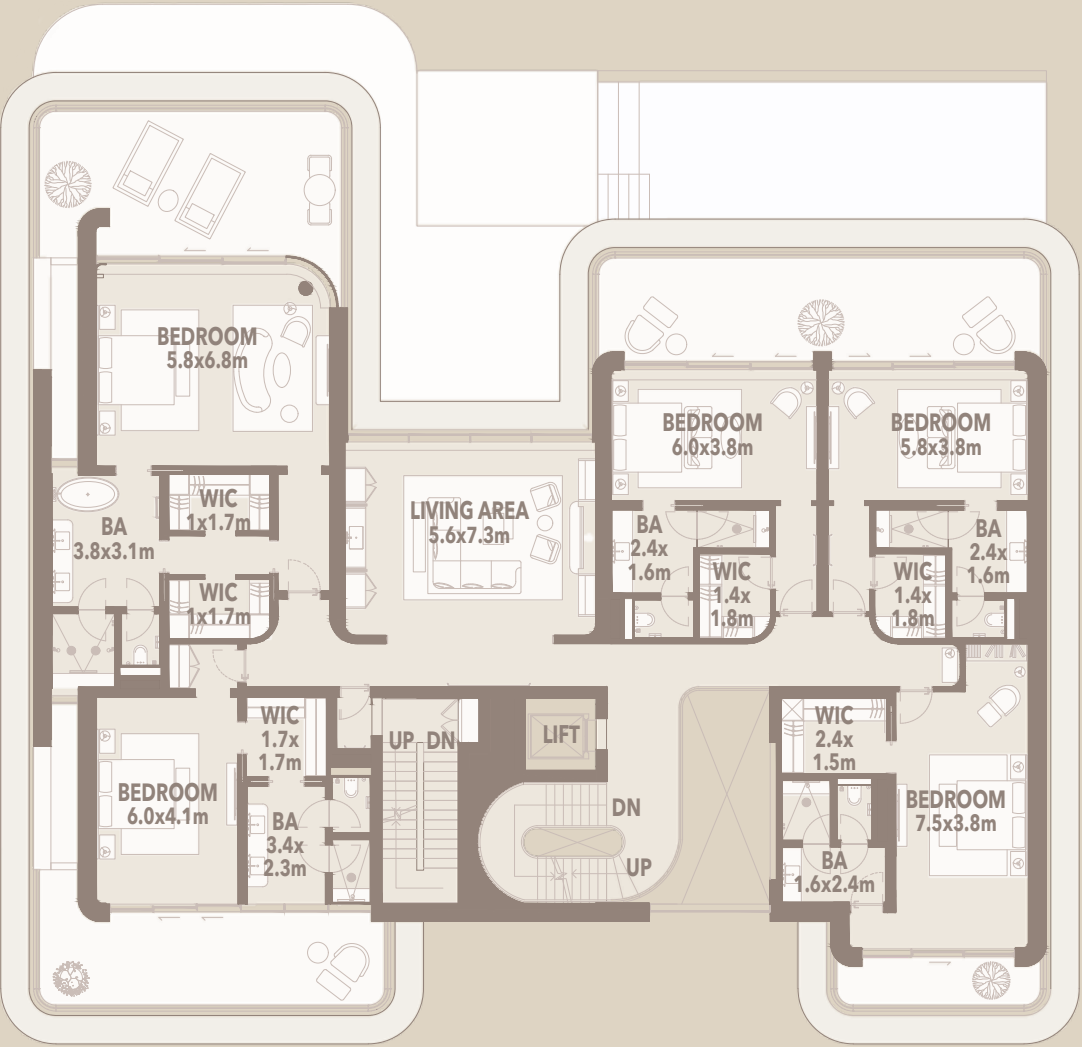
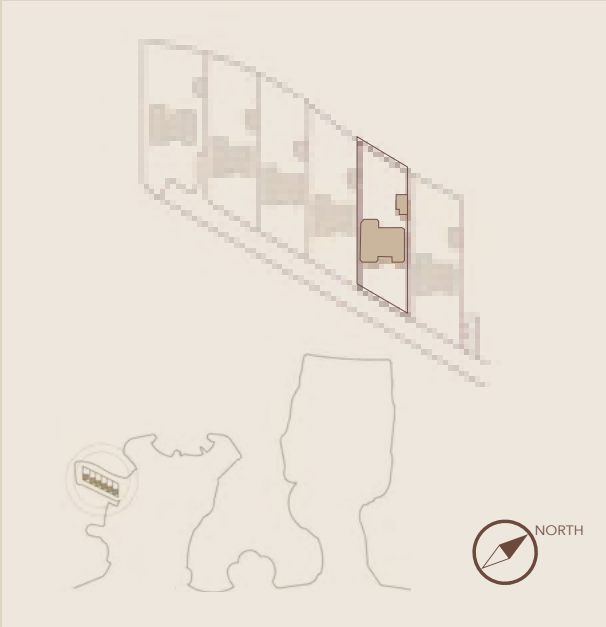
Disclaimer: Plans, details and unit orientation included are indicative only and are subject to change by the developer/seller at its sole discretion without notice and/or liability. All images, including swimming pools and landscape features, interior and exterior features, finishes, furnishings, view and scale are illustrative only. Final areas, orientation, dimensions, layout and materials may differ from those stated.



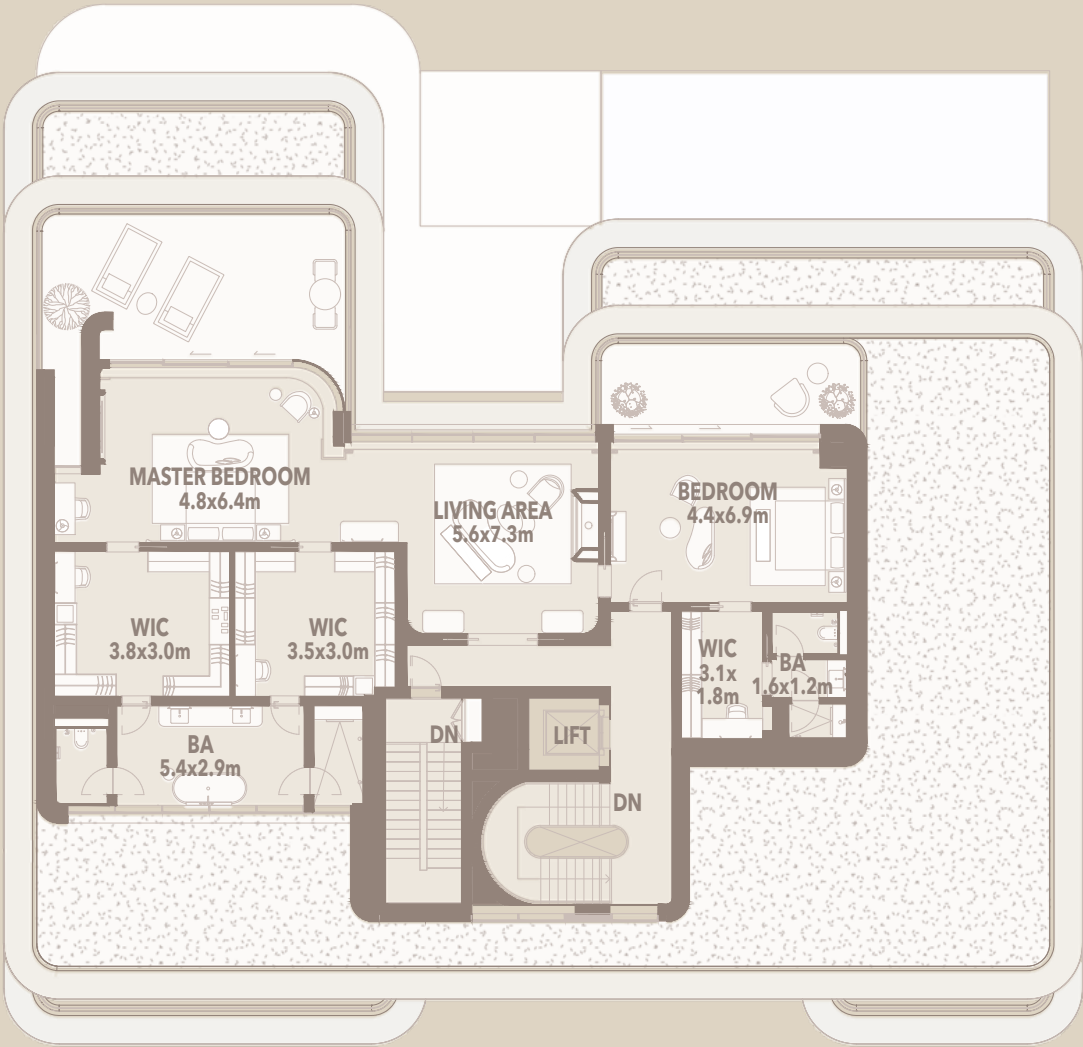
OCEAN MANSIONS  
TYPICAL

OM | 2

JUMEIRAH  
RESIDENCES  
ASORA BAY



FIRST FLOOR PLAN



SECOND FLOOR PLAN

UNIT SIZE

SUITE AREA (A) 1743.7 SQ M   18768.5 SQ FT	BALCONY AREA (B) 190.3 SQ M   2048.5 SQ FT	GARAGE AREA (C) 385.5 SQ M   4149.3 SQ FT	ENTRANCE / TERRACE AREA (D) 184.6 SQ M   1987 SQ FT
TOTAL AREA (A+B+C+D) 2504 SQ M   26953.3 SQ FT	TOTAL PLOT AREA 3860.1 SQ M   41550.2 SQ FT		

PARKING

NO. OF SPACES: 7

Disclaimer: Plans, details and unit orientation included are indicative only and are subject to change by the developer/seller at its sole discretion without notice and/or liability. All images, including swimming pools and landscape features, interior and exterior features, finishes, furnishings, view and scale are illustrative only. Final areas, orientation, dimensions, layout and materials may differ from those stated.

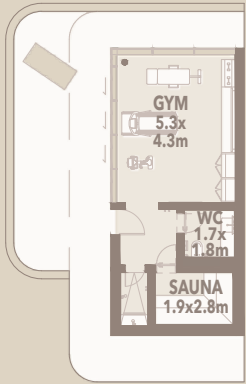




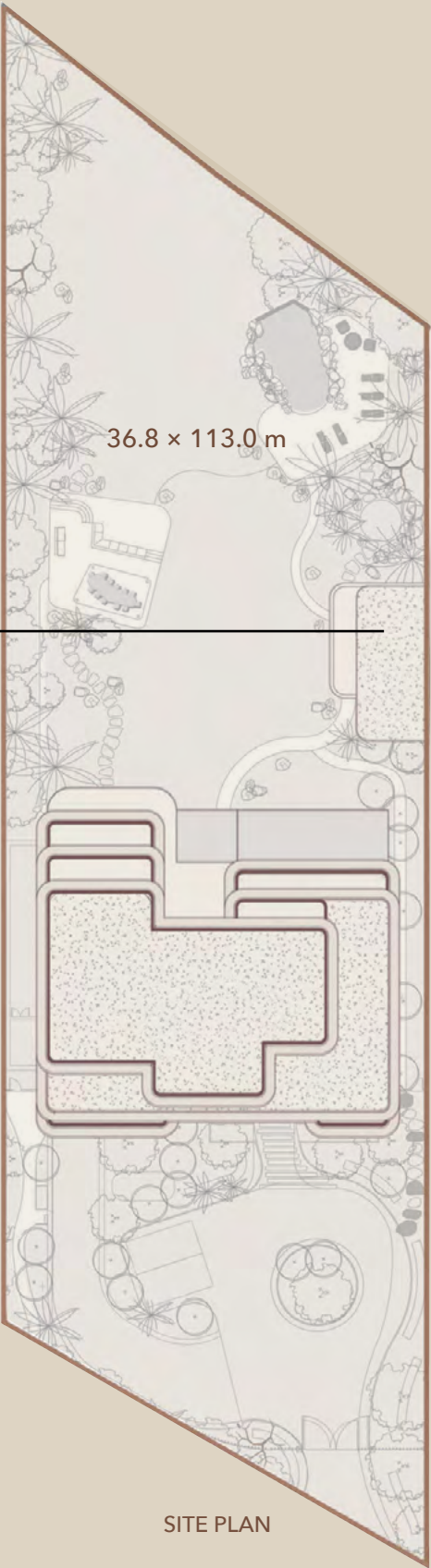
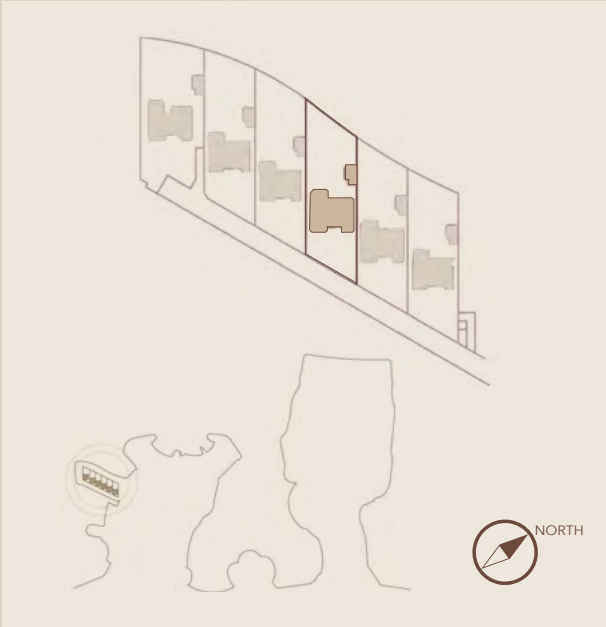
OCEAN MANSIONS  
TYPICAL

OM | 3

JUMEIRAH  
RESIDENCES  
ASORA BAY



GYM PAVILION FLOOR PLAN



SITE PLAN



BASEMENT FLOOR PLAN



GROUND FLOOR PLAN

UNIT SIZE

SUITE AREA (A) 1743.7 SQ M   18768.5 SQ FT	BALCONY AREA (B) 190.3 SQ M   2048.5 SQ FT	GARAGE AREA (C) 385.5 SQ M   4149.3 SQ FT	ENTRANCE / TERRACE AREA (D) 184.6 SQ M   1987 SQ FT
---	---	--	--

TOTAL AREA (A+B+C+D) 2504 SQ M   26953.3 SQ FT	TOTAL PLOT AREA 4002.2 SQ M   43079.7 SQ FT
---	--

PARKING

NO. OF SPACES: 7

Disclaimer: Plans, details and unit orientation included are indicative only and are subject to change by the developer/seller at its sole discretion without notice and/or liability. All images, including swimming pools and landscape features, interior and exterior features, finishes, furnishings, view and scale are illustrative only. Final areas, orientation, dimensions, layout and materials may differ from those stated.

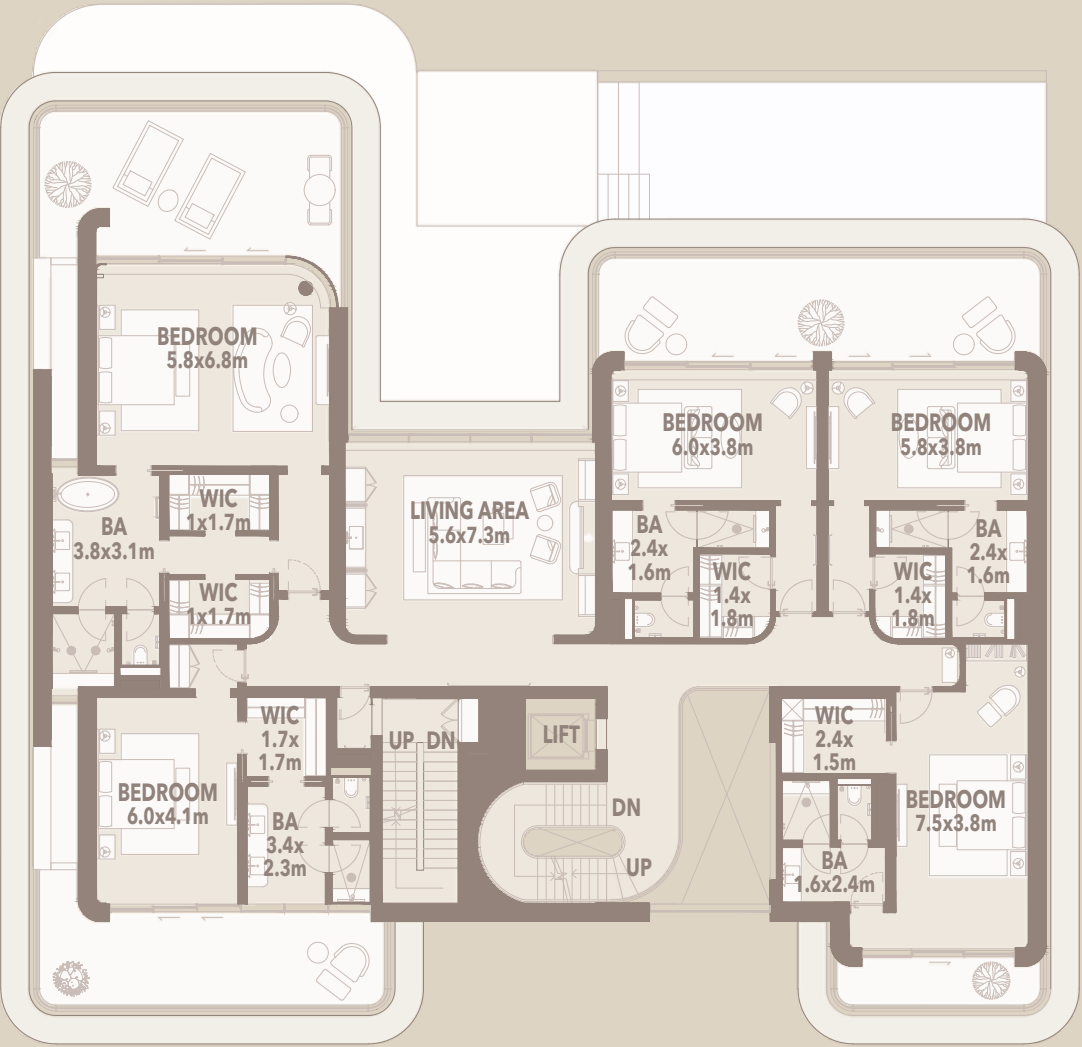




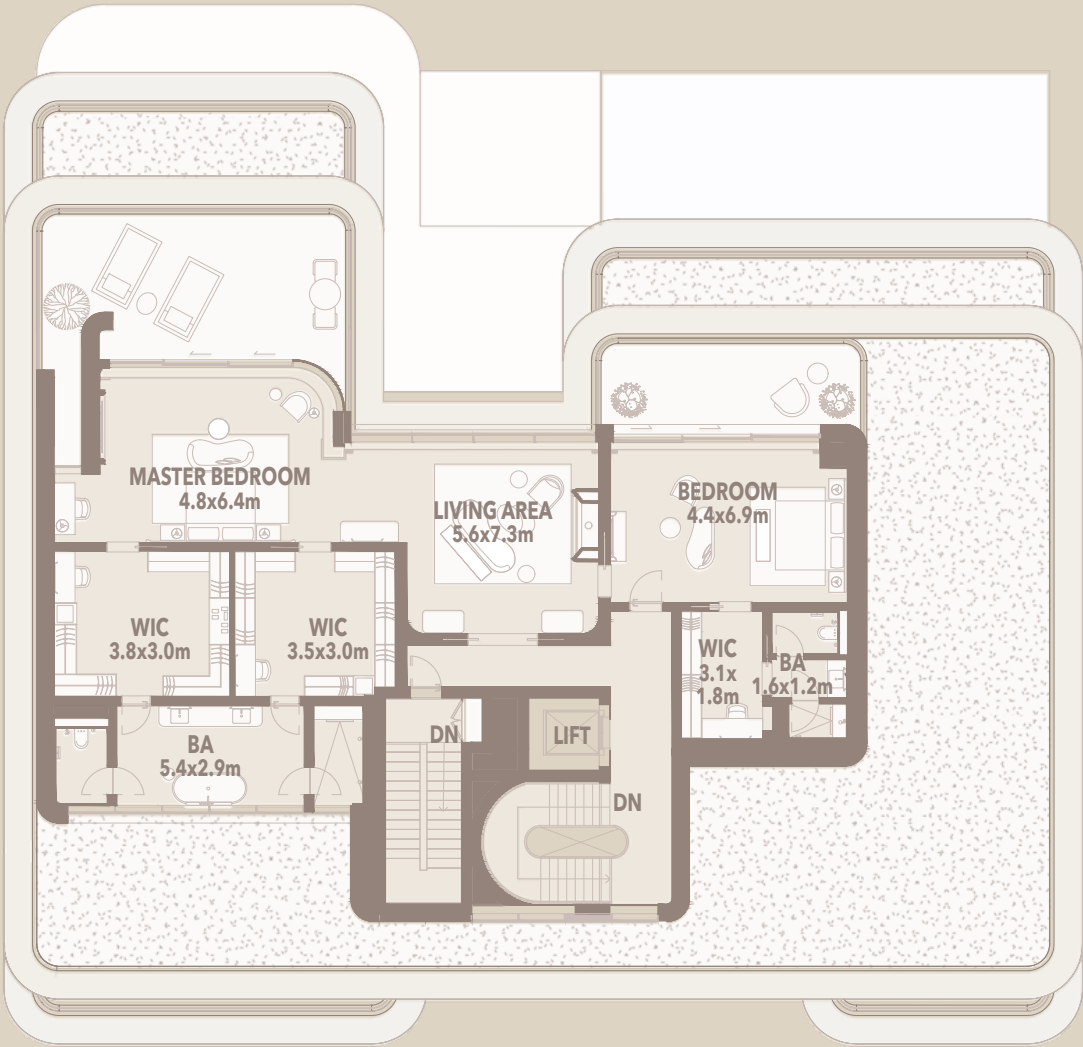
OCEAN MANSIONS  
TYPICAL

OM | 3

JUMEIRAH  
RESIDENCES  
ASORA BAY



FIRST FLOOR PLAN



SECOND FLOOR PLAN

UNIT SIZE

SUITE AREA (A) 1743.7 SQ M   18768.5 SQ FT	BALCONY AREA (B) 190.3 SQ M   2048.5 SQ FT	GARAGE AREA (C) 385.5 SQ M   4149.3 SQ FT	ENTRANCE / TERRACE AREA (D) 184.6 SQ M   1987 SQ FT
---	---	--	--

TOTAL AREA (A+B+C+D) 2504 SQ M   26953.3 SQ FT	TOTAL PLOT AREA 4002.2 SQ M   43079.7 SQ FT
---	--

PARKING

NO. OF SPACES: 7

Disclaimer: Plans, details and unit orientation included are indicative only and are subject to change by the developer/seller at its sole discretion without notice and/or liability. All images, including swimming pools and landscape features, interior and exterior features, finishes, furnishings, view and scale are illustrative only. Final areas, orientation, dimensions, layout and materials may differ from those stated.

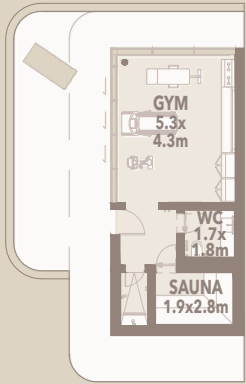




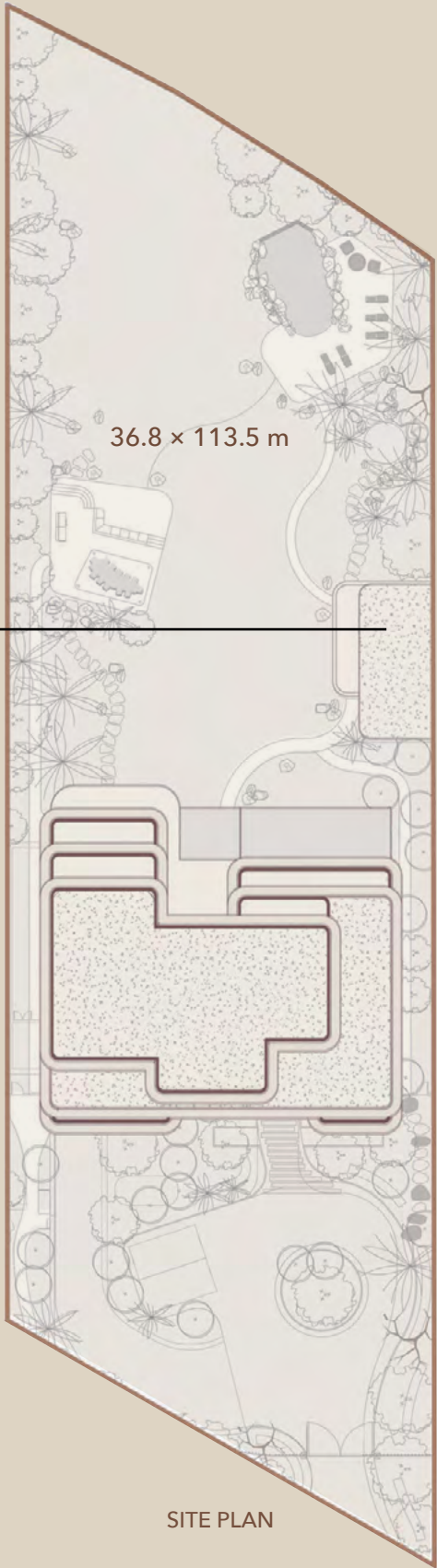
OCEAN MANSIONS  
TYPICAL

OM | 4

JUMEIRAH  
RESIDENCES  
ASORA BAY



GYM PAVILION FLOOR PLAN



SITE PLAN



BASEMENT FLOOR PLAN



GROUND FLOOR PLAN

UNIT SIZE

SUITE AREA (A) 1743.7 SQ M   18768.5 SQ FT	BALCONY AREA (B) 190.3 SQ M   2048.5 SQ FT	GARAGE AREA (C) 385.5 SQ M   4149.3 SQ FT	ENTRANCE / TERRACE AREA (D) 184.6 SQ M   1987 SQ FT
---	---	--	--

TOTAL AREA (A+B+C+D) 2504 SQ M   26953.3 SQ FT	TOTAL PLOT AREA 4171.6 SQ M   44903.2 SQ FT
---	--

PARKING

NO. OF SPACES: 7

Disclaimer: Plans, details and unit orientation included are indicative only and are subject to change by the developer/seller at its sole discretion without notice and/or liability. All images, including swimming pools and landscape features, interior and exterior features, finishes, furnishings, view and scale are illustrative only. Final areas, orientation, dimensions, layout and materials may differ from those stated.

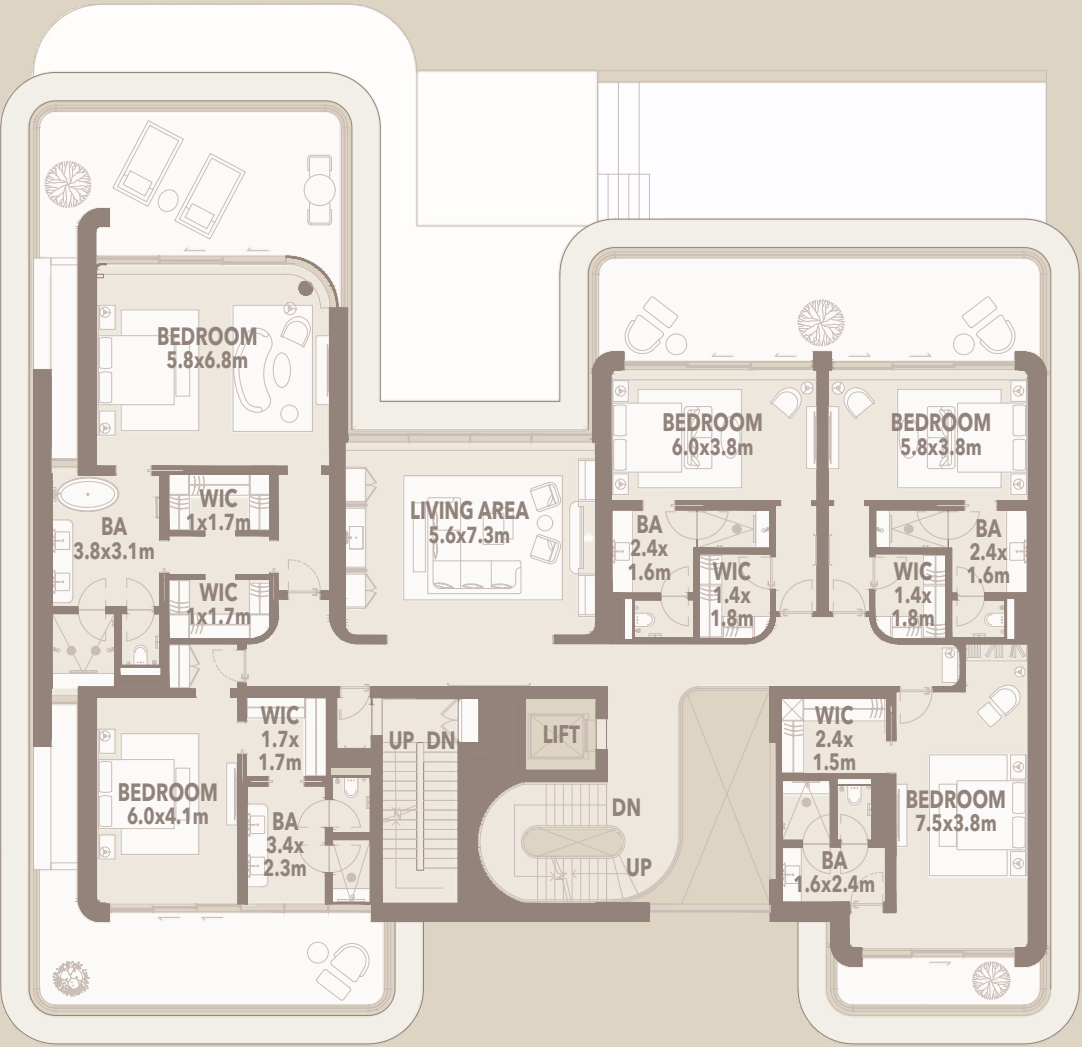




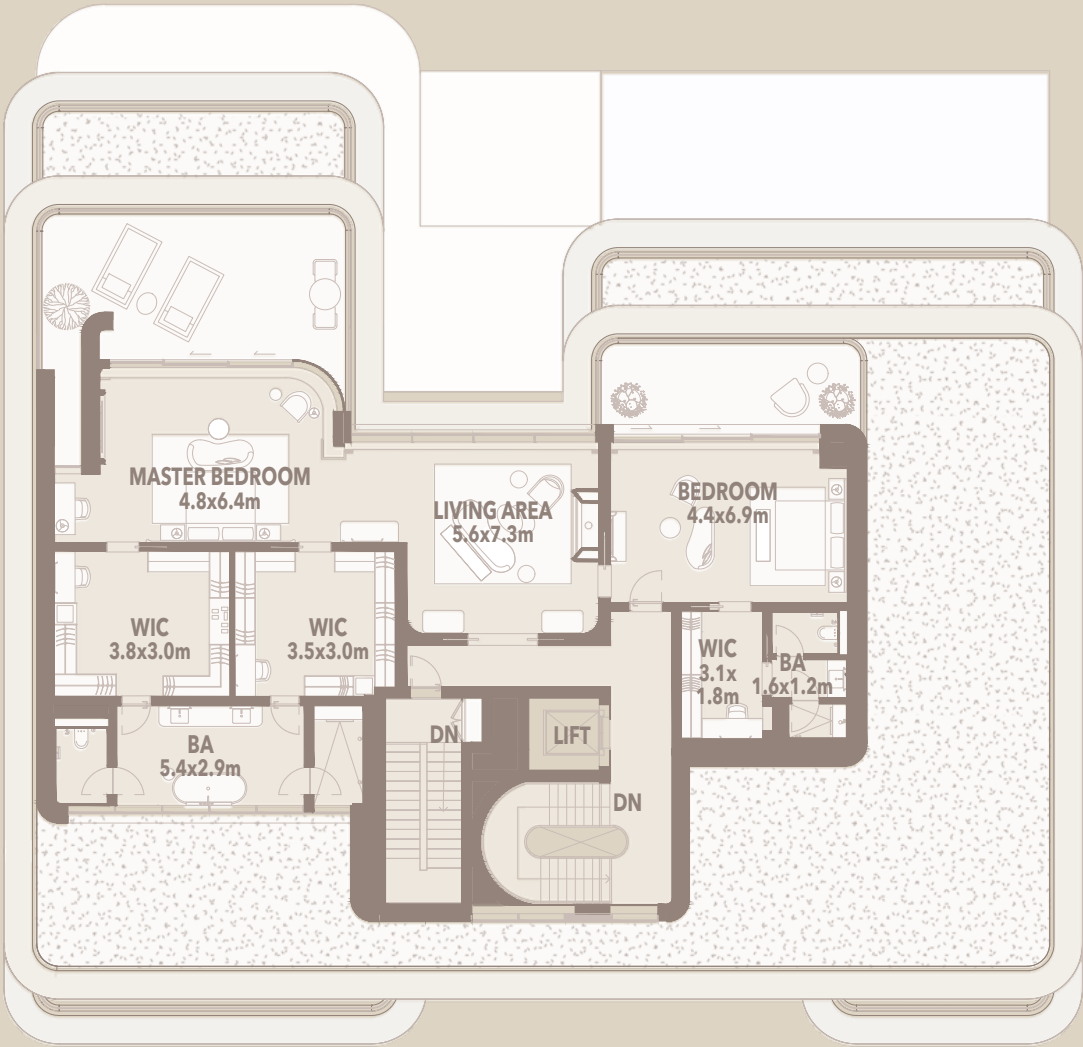
OCEAN MANSIONS  
TYPICAL

OM | 4

JUMEIRAH  
RESIDENCES  
ASORA BAY



FIRST FLOOR PLAN



SECOND FLOOR PLAN

UNIT SIZE

SUITE AREA (A)	BALCONY AREA (B)	GARAGE AREA (C)	ENTRANCE / TERRACE AREA (D)
1743.7 SQ M   18768.5 SQ FT	190.3 SQ M   2048.5 SQ FT	385.5 SQ M   4149.3 SQ FT	184.6 SQ M   1987 SQ FT
TOTAL AREA (A+B+C+D)		TOTAL PLOT AREA	
2504 SQ M   26953.3 SQ FT		4171.6 SQ M   44903.2 SQ FT	

PARKING

NO. OF SPACES: 7

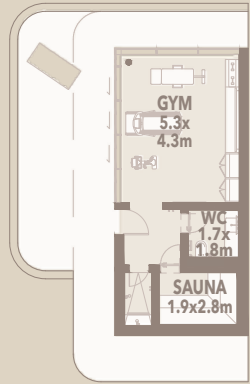
Disclaimer: Plans, details and unit orientation included are indicative only and are subject to change by the developer/seller at its sole discretion without notice and/or liability. All images, including swimming pools and landscape features, interior and exterior features, finishes, furnishings, view and scale are illustrative only. Final areas, orientation, dimensions, layout and materials may differ from those stated.



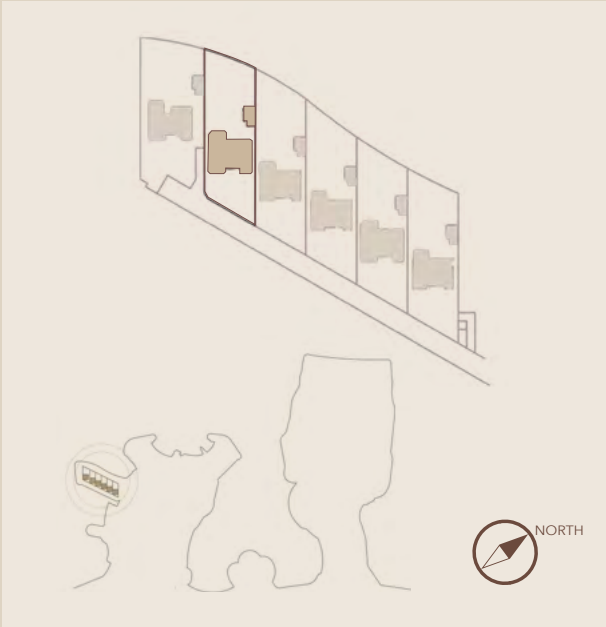


OCEAN MANSIONS  
TYPICAL

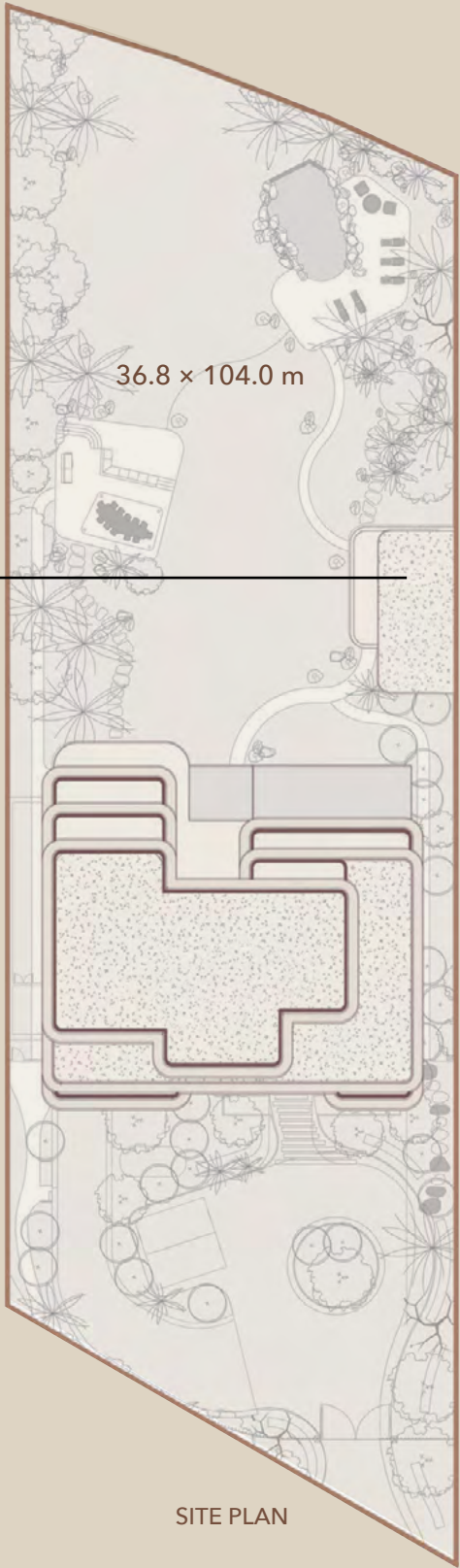
OM | 5



GYM PAVILION FLOOR PLAN



SITE PLAN



BASEMENT FLOOR PLAN



GROUND FLOOR PLAN

UNIT SIZE

SUITE AREA (A) 1743.7 SQ M   18768.5 SQ FT	BALCONY AREA (B) 190.3 SQ M   2048.5 SQ FT	GARAGE AREA (C) 385.5 SQ M   4149.3 SQ FT	ENTRANCE / TERRACE AREA (D) 184.6 SQ M   1987 SQ FT
TOTAL AREA (A+B+C+D) 2504 SQ M   26953.3 SQ FT	TOTAL PLOT AREA 4043.8 SQ M   43527.5 SQ FT		

PARKING

NO. OF SPACES: 7

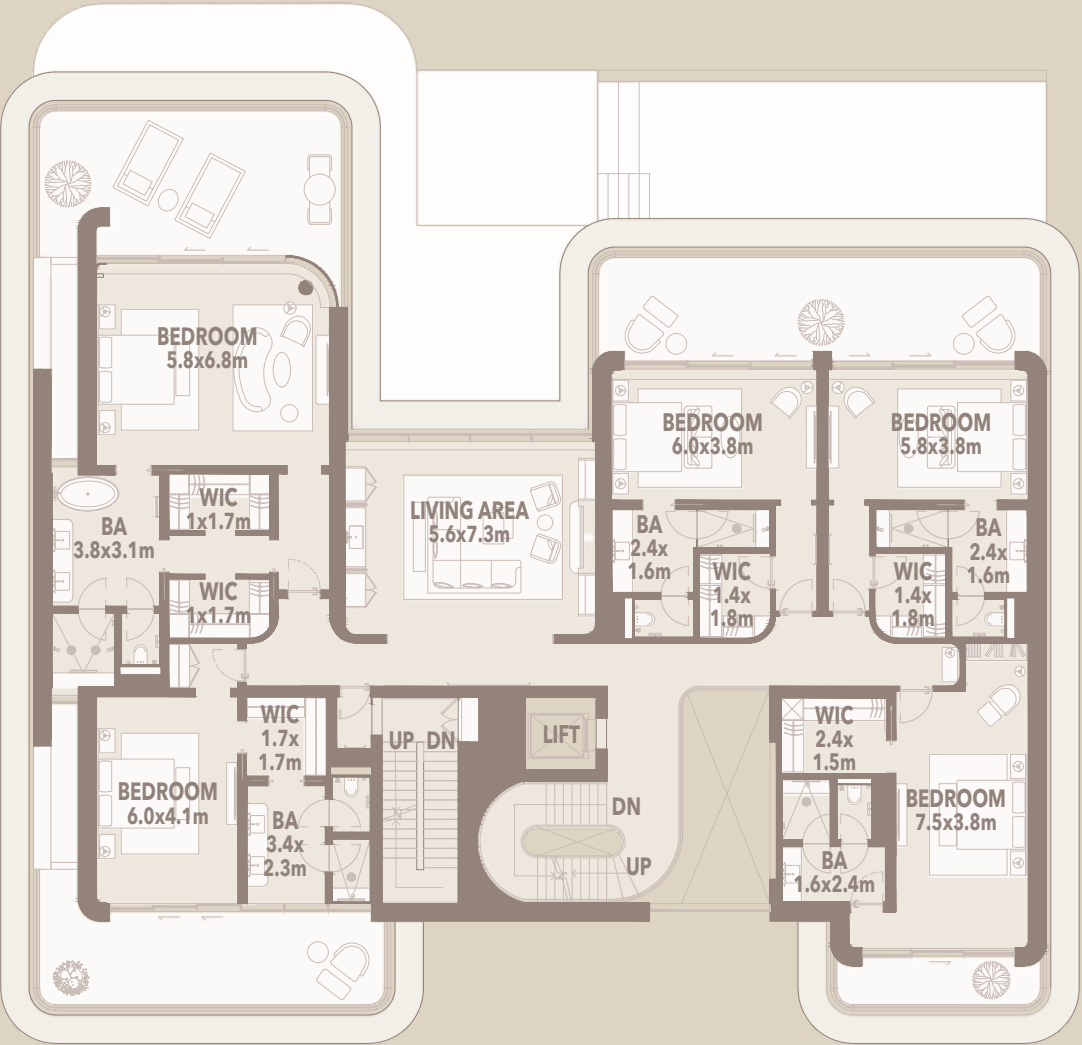
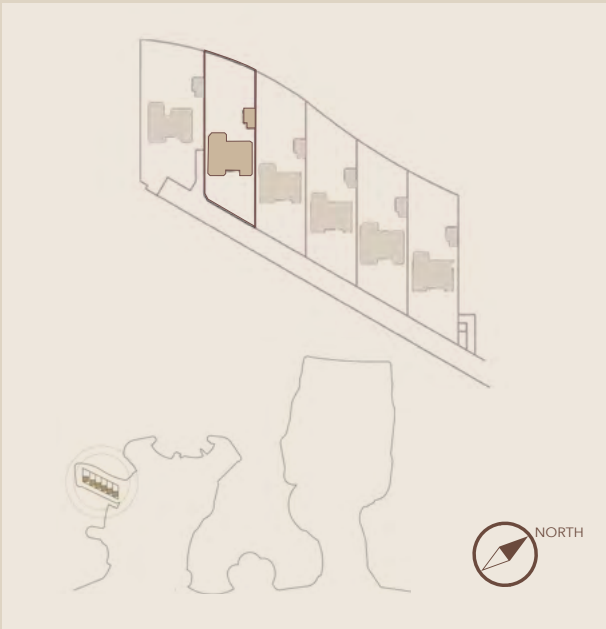
Disclaimer: Plans, details and unit orientation included are indicative only and are subject to change by the developer/seller at its sole discretion without notice and/or liability. All images, including swimming pools and landscape features, interior and exterior features, finishes, furnishings, view and scale are illustrative only. Final areas, orientation, dimensions, layout and materials may differ from those stated.



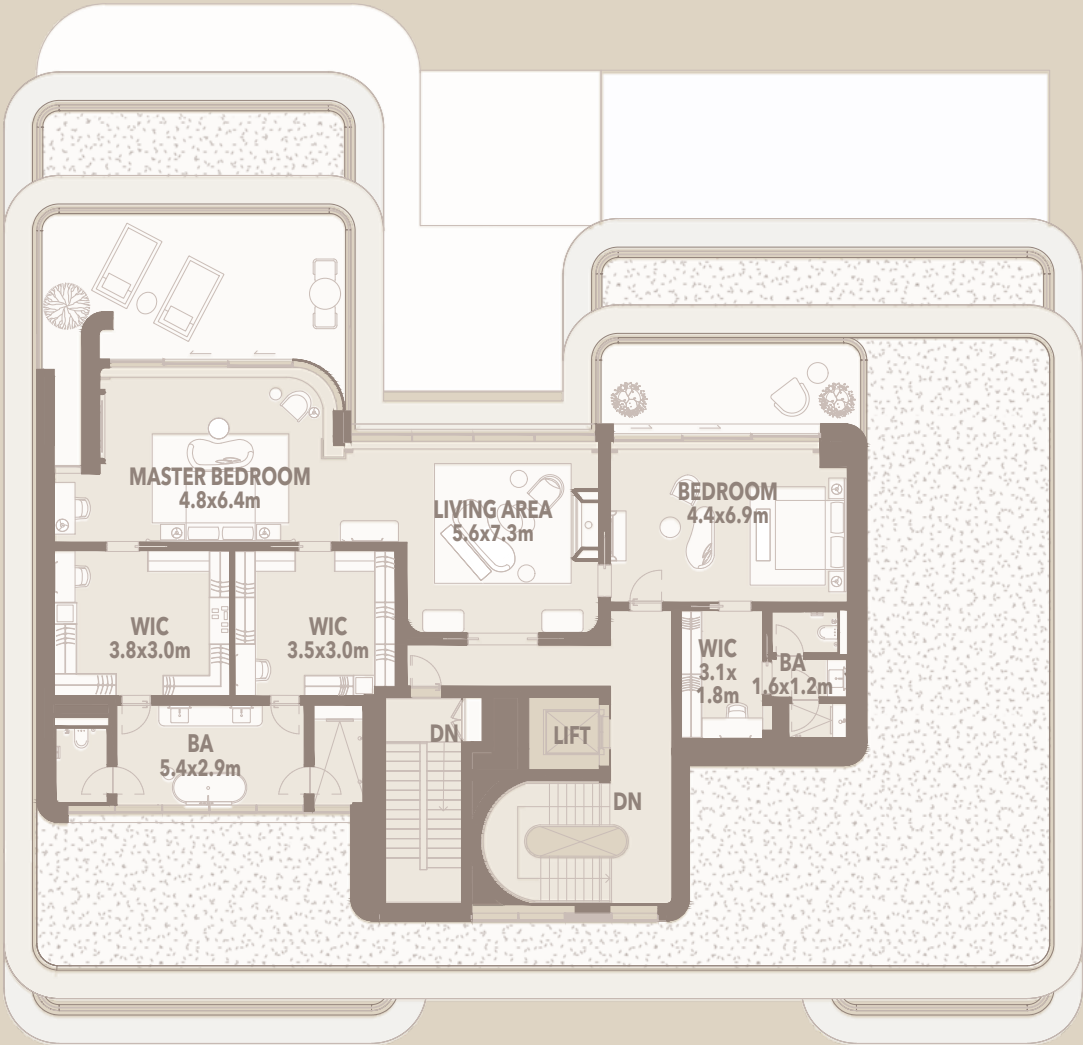
OCEAN MANSIONS  
TYPICAL

OM | 5

JUMEIRAH  
RESIDENCES  
ASORA BAY



FIRST FLOOR PLAN



SECOND FLOOR PLAN

UNIT SIZE

SUITE AREA (A)	BALCONY AREA (B)	GARAGE AREA (C)	ENTRANCE / TERRACE AREA (D)
1743.7 SQ M   18768.5 SQ FT	190.3 SQ M   2048.5 SQ FT	385.5 SQ M   4149.3 SQ FT	184.6 SQ M   1987 SQ FT
TOTAL AREA (A+B+C+D)		TOTAL PLOT AREA	
2504 SQ M   26953.3 SQ FT		4043.8 SQ M   43527.5 SQ FT	

PARKING

NO. OF SPACES: 7

Disclaimer: Plans, details and unit orientation included are indicative only and are subject to change by the developer/seller at its sole discretion without notice and/or liability. All images, including swimming pools and landscape features, interior and exterior features, finishes, furnishings, view and scale are illustrative only. Final areas, orientation, dimensions, layout and materials may differ from those stated.

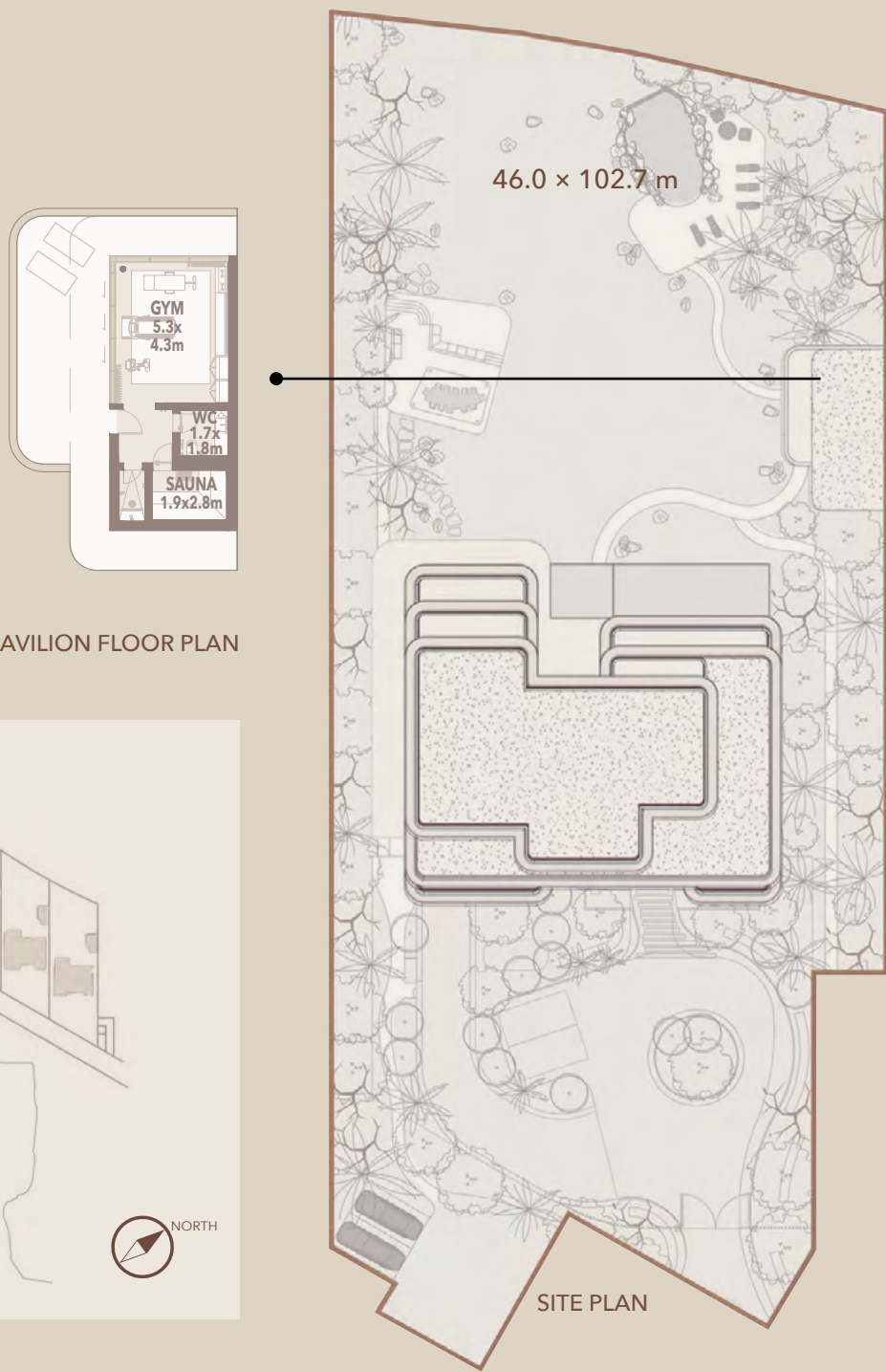




OCEAN MANSIONS  
CORNER

OM | 6

JUMEIRAH  
RESIDENCES  
ASORA BAY



UNIT SIZE

SUITE AREA (A)	BALCONY AREA (B)	GARAGE AREA (C)	ENTRANCE / TERRACE AREA (D)
1742.5 SQ M   18756.5 SQ FT	190.3 SQ M   2048.5 SQ FT	385.5 SQ M   4149.3 SQ FT	212.7 SQ M   2289.5 SQ FT

TOTAL AREA (A+B+C+D)	TOTAL PLOT AREA
2531 SQ M   27243.8 SQ FT	4558.4 SQ M   49066.1 SQ FT

PARKING

NO. OF SPACES: 7

Disclaimer: Plans, details and unit orientation included are indicative only and are subject to change by the developer/seller at its sole discretion without notice and/or liability. All images, including swimming pools and landscape features, interior and exterior features, finishes, furnishings, view and scale are illustrative only. Final areas, orientation, dimensions, layout and materials may differ from those stated.

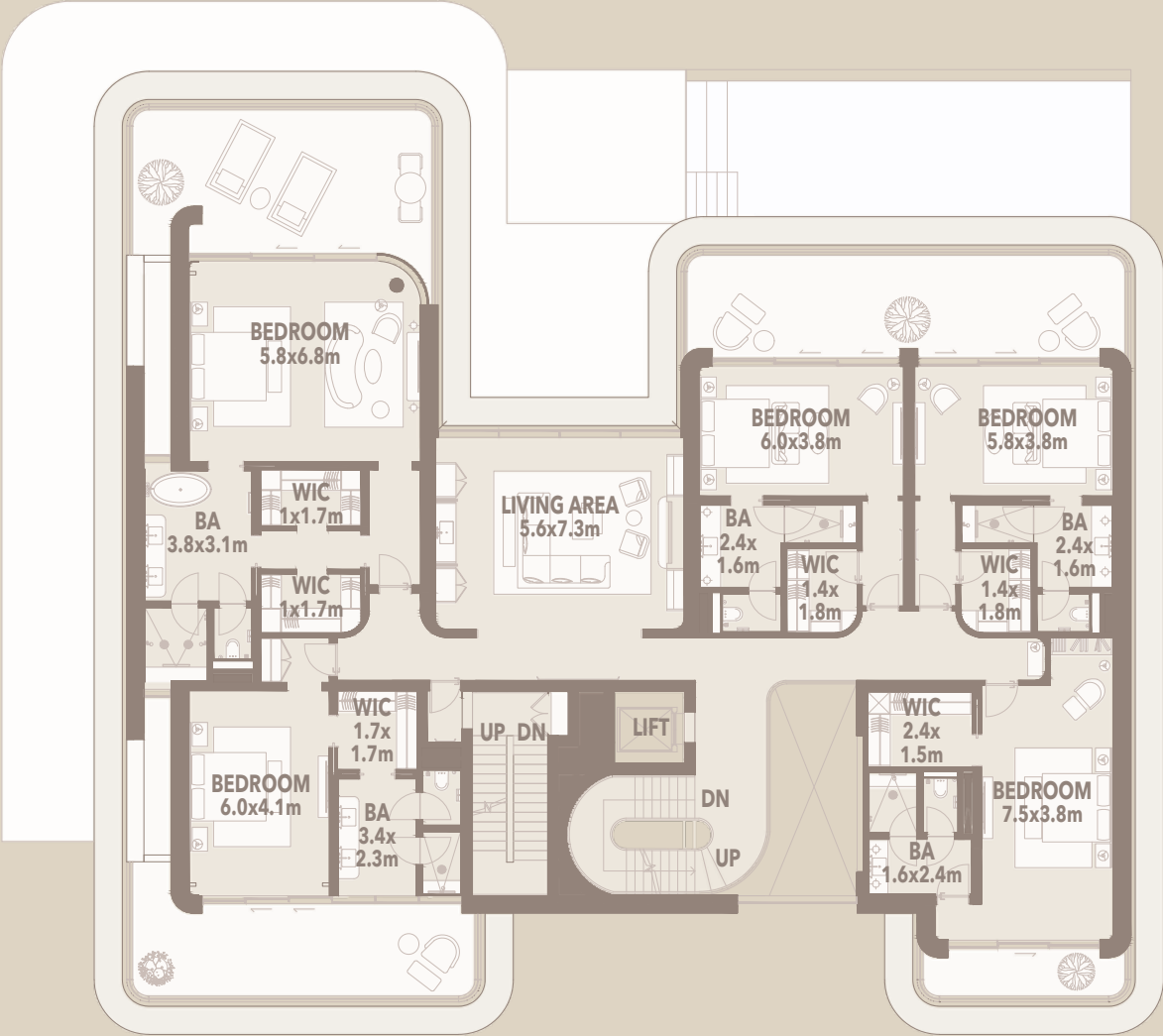
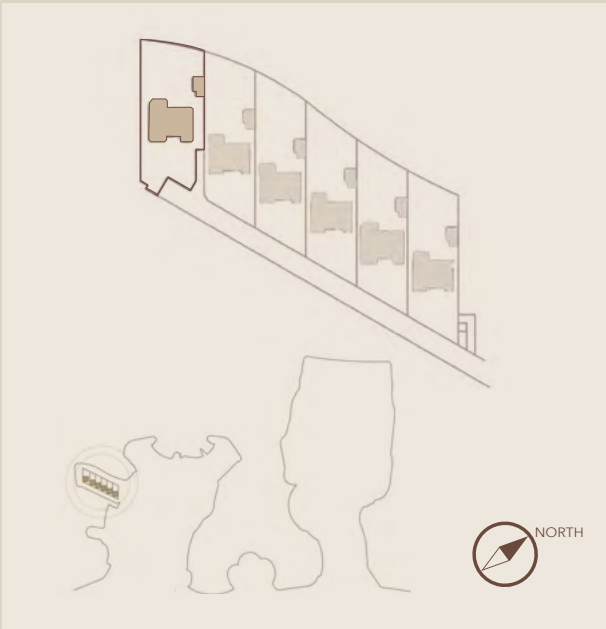




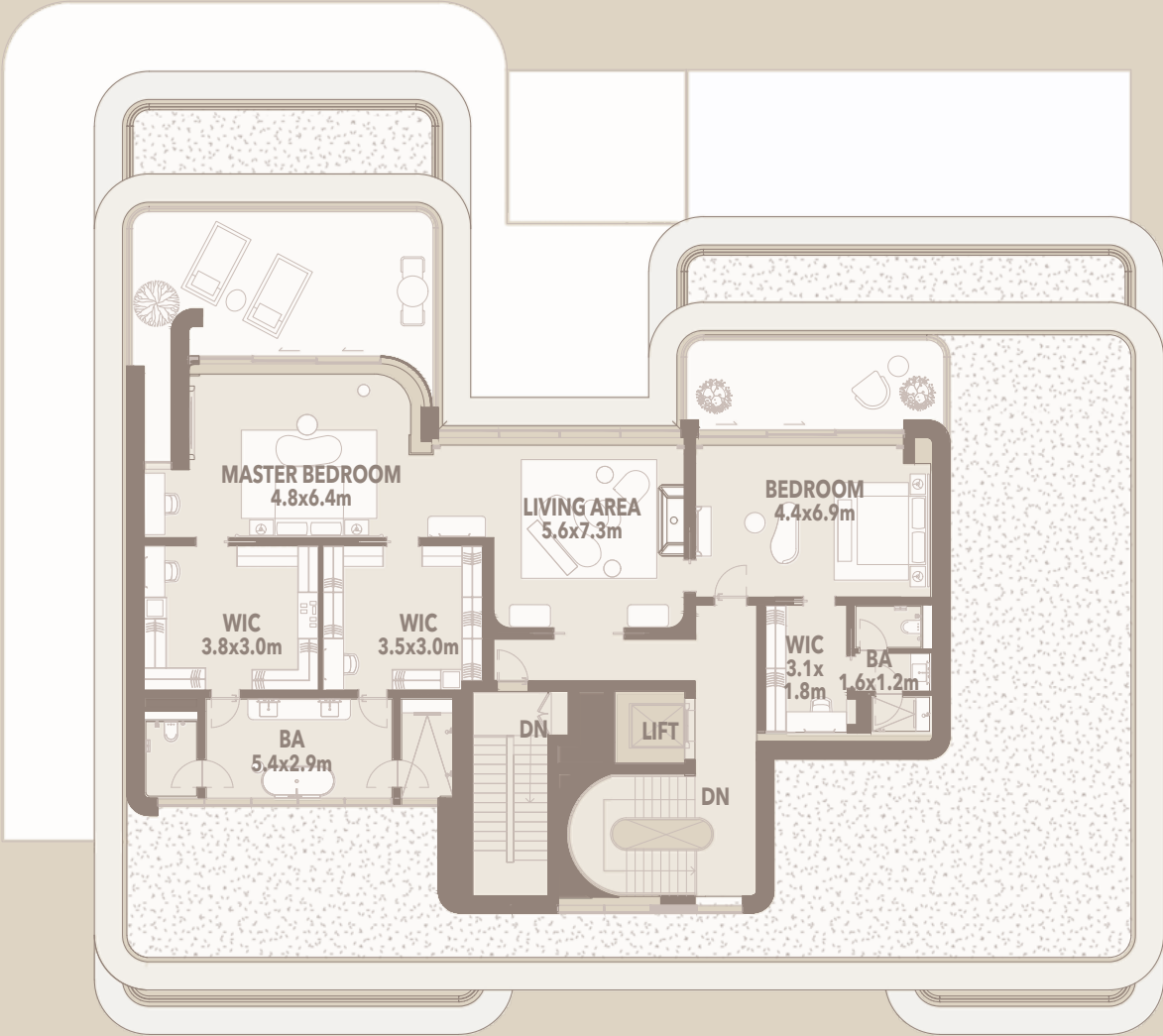
OCEAN MANSIONS  
CORNER

OM | 6

JUMEIRAH  
RESIDENCES  
ASORA BAY



FIRST FLOOR PLAN



SECOND FLOOR PLAN

UNIT SIZE

SUITE AREA (A) 1742.5 SQ M   18756.5 SQ FT	BALCONY AREA (B) 190.3 SQ M   2048.5 SQ FT	GARAGE AREA (C) 385.5 SQ M   4149.3 SQ FT	ENTRANCE / TERRACE AREA (D) 212.7 SQ M   2289.5 SQ FT
---	---	--	--

TOTAL AREA (A+B+C+D) 2531 SQ M   27243.8 SQ FT	TOTAL PLOT AREA 4558.4 SQ M   49066.1 SQ FT
---	--

PARKING

NO. OF SPACES: 7

Disclaimer: Plans, details and unit orientation included are indicative only and are subject to change by the developer/seller at its sole discretion without notice and/or liability. All images, including swimming pools and landscape features, interior and exterior features, finishes, furnishings, view and scale are illustrative only. Final areas, orientation, dimensions, layout and materials may differ from those stated.









# CRAFTING THE FUTURE OF ULTRA LIVING

At the forefront of redefining the global standard of modern living, Meraas has cemented its position as Dubai's leading master developer, consistently delivering projects that inspire and innovate.



With a commitment to creating world-class real estate that enhances Dubai's status as a premier global investment hub, Meraas has crafted an unparalleled portfolio of iconic developments. From the serene sophistication of Bvlgari Residences to the vibrant allure of City Walk and Bluewaters Residences, each project is a testament to Meraas' pursuit of innovation and refined living.

Every Meraas development blends artistry, precision, and visionary design, elevating the lifestyle experience of its residents and shaping the skyline of Dubai. At Jumeirah Asora Bay, this legacy of excellence continues, offering a new dimension in ultra living for the world's most discerning individuals.



